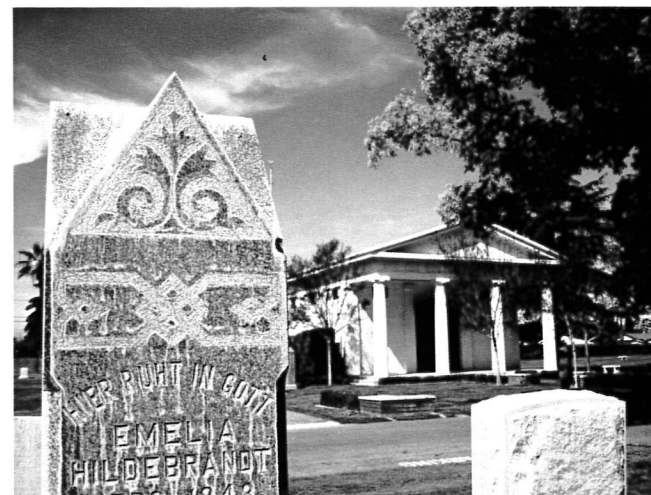


More of Anaheim Cemetery's points of interest:

14. **Kraemer Monument** – The burial place of Samuel and Angelina Yorba Kraemer. The Kraemer Building, built the 1920s, was the tallest building in North Orange County at the time, and the only building of Anaheim's downtown still standing (on Center Street just east of Anaheim Boulevard). Samuel's father, Daniel, buried to the west, was a founder of the City of Placentia.
15. **Hartmann Mausoleum** – Built in in 1915 in a classic Greek revival style. This is the most expensive privately owned structure in the cemetery, made of granite and marble. F. A. Hartmann also funded the Pioneer Memorial Archway (#11).
16. **Dwyer Pioneer Monument** – This magnificent obelisk was erected in 1930 by Marie Horstmann Dwyer, daughter of an original Los Angeles Vineyard Society pioneer. The Dwyer family donated to the community the elegant Victorian Woelke-Stoffel House and the land that is now becoming the new Founders' Park on West Street.
17. **Koenig's Angel** – William Koenig, an original colonist, was the only experienced vintner of the group. His expertise helped the colony to thrive. The angel on his marker has been damaged over time, and has at some point been reset backwards to its original orientation, but hopes are that it can be restored in the future.
18. **Rimpau Mausoleum** – It's no accident that this structure resembles an old Spanish Mission. Theodore Rimpau and his wife, Natalia Carrillo, were devout Catholics, and were a driving force behind the establishment of St. Boniface Catholic Church. Their graceful mansion was once where Anaheim's Central Library now stands.
19. **Bennerscheidt** – Original settler Joseph Bennerscheidt was a metalworker and city councilman. Today, the Benner Metals company traces its roots to directly Bennerscheidt's 1870 company.
20. **Original Cemetery Plot (Central Area)** – Many impressive monuments are in this area. Among the well-known names here is Kraemer, as well as Grimshaw, whose impressive family home stands today at Lincoln and Rose, overlooking the monument marking the eastern border of the original colony.
21. **Carroll** – Timothy Carroll was a prolific inventor and nurseryman, specializing in exotic plants. He planted the now-huge Morton Bay Fig that is a landmark at Founders' Park. His mansion has become part of Fairmont Private School on Mable St.
22. **GAR Monument** – There are 56 veterans of the Civil War buried at the Anaheim Cemetery. A Grand Army of the Republic monument stands near the Community Mausoleum.

THE HISTORIC ANAHEIM CEMETERY

FOUNDED 1866
1400 EAST SYCAMORE STREET
ANAHEIM, CA 92805

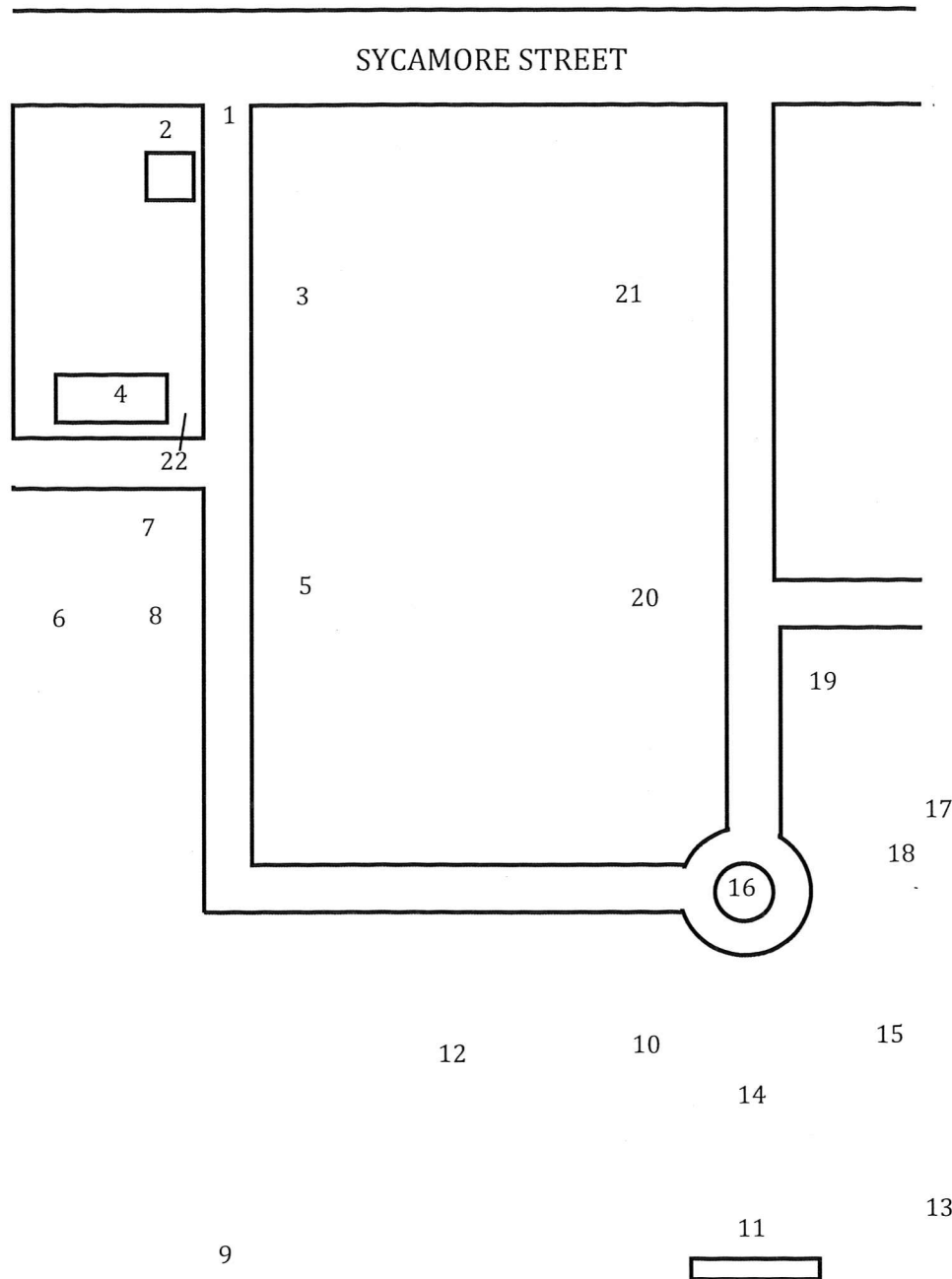


The Anaheim Cemetery has been under the care of the Orange County Cemetery District since 1985, when the District was formed to manage the historic cemeteries of Anaheim, Santa Ana, and El Toro. When the burial grounds were first created, endowment care was not considered, as families took great pride in caring for their loved ones' resting places. Over time, though, families moved away or otherwise were unable to personally care for their plots, and, as a consequence, local cemeteries fell into disrepair.

By creating the Orange County Cemetery District, the State of California enabled the District to care for the historic grounds while continuing to provide affordable interment services for the public, regardless of religious background or other issues that might keep one from using a private cemetery service.

"We are here to provide you with affordable interment services while maintaining a beautifully landscaped living memorial in perpetuity, where you can come to honor and celebrate life."

THE ANAHEIM CEMETERY



Some of the Anaheim Cemetery's points of interest:

1. **Entrance** - The modern gates at the north end of the cemetery are not the original entryway. See Pioneer Memorial Archway (#11).
2. **Rose Gardens and Cemetery Office** - This peaceful place is often chosen by those who want their ashes scattered. The stained glass windows on the back of the office are from the 1902 St. Boniface Catholic Church.
3. **Heyermann** - The final resting place of Dr. John F. and Sophie Heyermann. Dr. Heyermann was an early Anaheim physician and civic leader.
4. **Community Mausoleum** - The first public mausoleum on the West Coast, constructed in 1914. The interior is entirely of marble.
5. **Donna Vicente y Serrano Sepulveda Yorba Carrillo** - A member of one of Southern California's true pioneer families. She lived for many years in what is now known as the Mother Colony House.
6. **Original Cemetery Plot (West End)** - Part of the original cemetery, with many upright markers, often in German or Spanish. Historic Anaheim names include Wissner, Pressel, and Renner.
7. **Backs/ Stock** - This large monument close to the road marks the resting place of the Backs family. Joseph and Ferdinand came from Germany, bringing their cabinet-making skills. Here they also made coffins and subsequently became Anaheim's first morticians.
8. **Schumacher Mausoleum** - This Greek Revival structure marks the final resting place of a prominent Anaheim family.
9. **Charles Lehman** - The gravesite of the first Anaheim peace officer killed in the line of duty. He was fatally shot July 27, 1872.
10. **Langenberger Mausoleum** - This Mission Revival style structure, styled after the San Francisco de Asis Mission in San Francisco, was built by what could be justifiably be considered the original pioneer family in the area. German-immigrant John August Langenberger was working for the rancho landowner, Juan Pacifico Ontiveros, when other Germans came to settle Anaheim as the Los Angeles Vineyard Society.
11. **Pioneer Memorial Archway** - Marking the original entrance to the cemetery. Constructed in 1917 with funds donated by F. A. Hartmann. The Cemetery District recently had the structure professionally restored.
12. **Original Cemetery Plot (East End)** - Historic names to look for here include Kroeger, Luedke, Boege, Fischer, and Boldt, as well as Frederick Kuelp, Anaheim's first schoolmaster. Further east (near the Koenig Angel, #17), are the Zeyn and Kroeger plots.
13. **Chinese Cemetery** - Early Anaheim had a significant Chinatown, populated mostly by agricultural workers. It is unknown how many are buried here, as it was the cultural practice to send the remains back to China, and original wooden markers of those buried here have long been lost. The Dawn Redwood trees planted here are believed to be the only grove of this species in California.